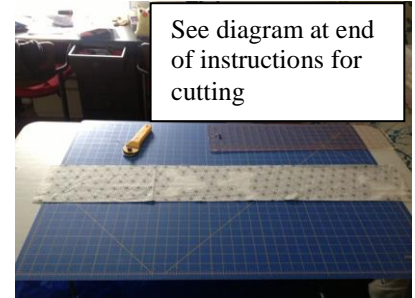


Wallet

What you will need:

- 1 piece of fabric 40" wide x 6" high
- 1 sew on snap



1. Sew the 6" sides of the fabric together, wrong sides out.*

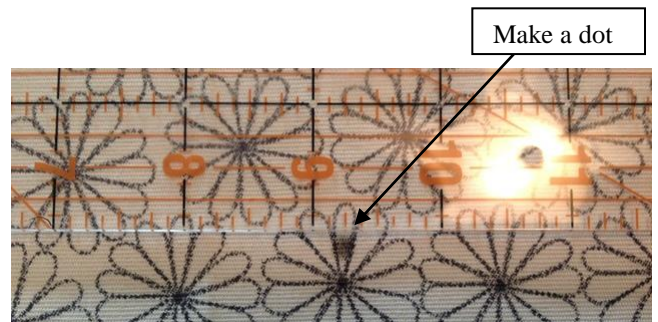


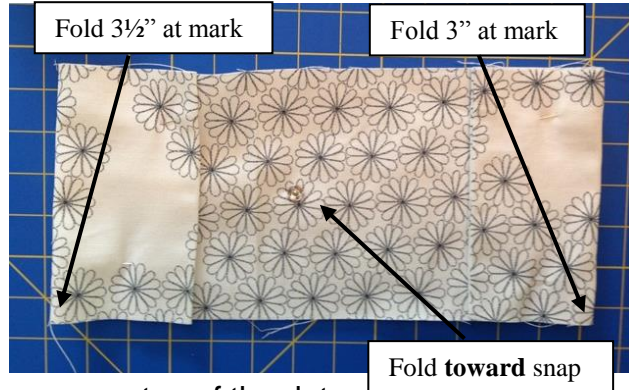
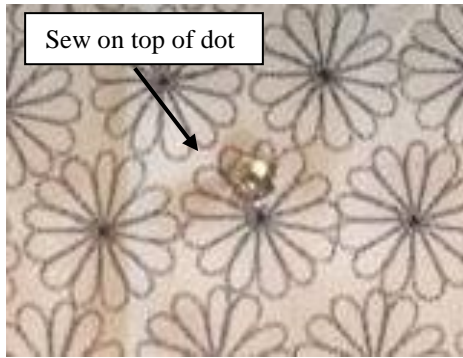
2. Turn right side out and press seam.



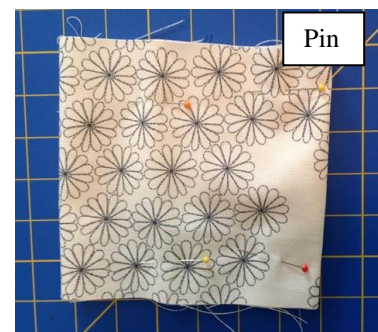
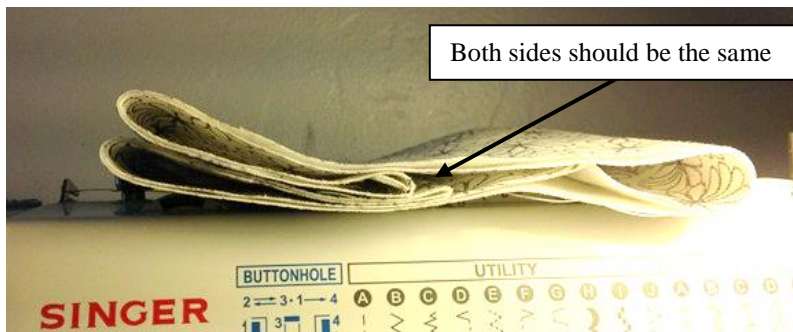
3. Now you are going to make fold marks:
Make a mark **3"** from the **seam** side then Make a mark **3 1/2"** from the **fold** side.

4. Turn the fabric over. You are going to make the mark for the snap. Draw a big dot that is 9 1/4" from the **folded side**, right in the middle between the cut sides. It will be 3" from each cut side. To double check, the mark should be 10 1/4" from the **seam side**. Pin the fabric on either side of the snap.





5. Sew the protruding side of the snap on top of the dot.
6. Fold one side over at the 3½”mark toward the snap and press.
7. Fold the other side over at the 3” mark toward the snap and press.



8. Fold in half so the snap is on the **inside**. Peek inside at the folds to make sure they look the same on each side. Pin.



9. Sew both side seams (the unfinished sides) with a 3/8” seam, then trim close to sewing line
10. Turn the whole thing inside out and press. With a knitting needle or chopstick, poke the top corners so they make a point.



11. Turn the smaller section (the side with the snap) inside out. Poke the bottom corners with a knitting needle to make a point.



12. Fold over the flap $\frac{1}{2}$ " from the top and press (or just put in a book over night to flatten when you're done).
13. Make a mark where the other half of the snap will meet the top half. Make sure you are facing the indenting part of the snap outwards. Hand sew it on.

You are done!

***Notes:**

- If you are using 2 different fabrics, cut two pieces $20\frac{1}{2}$ " and stitch them together at the 6" side.
- Use the width of the foot for the seam allowance
- If using fusible interfacing (if the fabric is thin), fuse it onto the wrong side of the fabric, but don't fuse it outside the seam line

DIAGRAM FOR CUTTING and marking:

